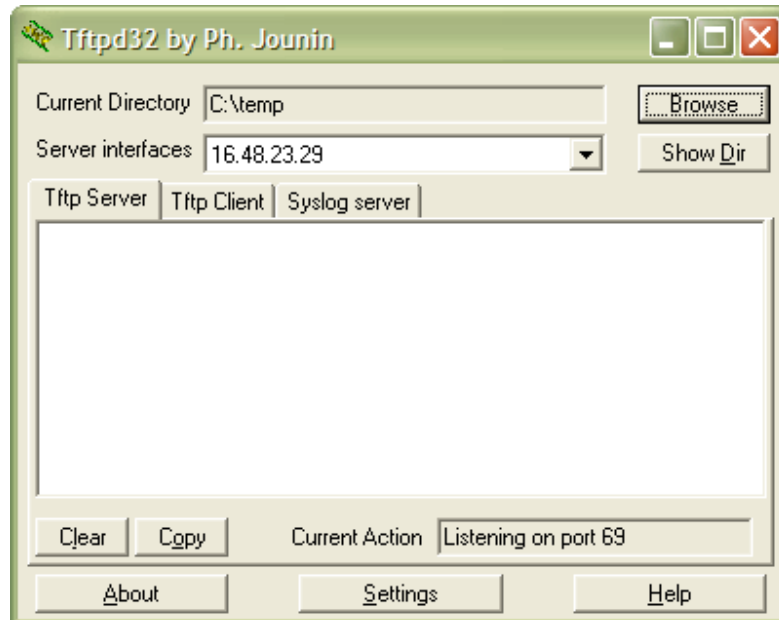
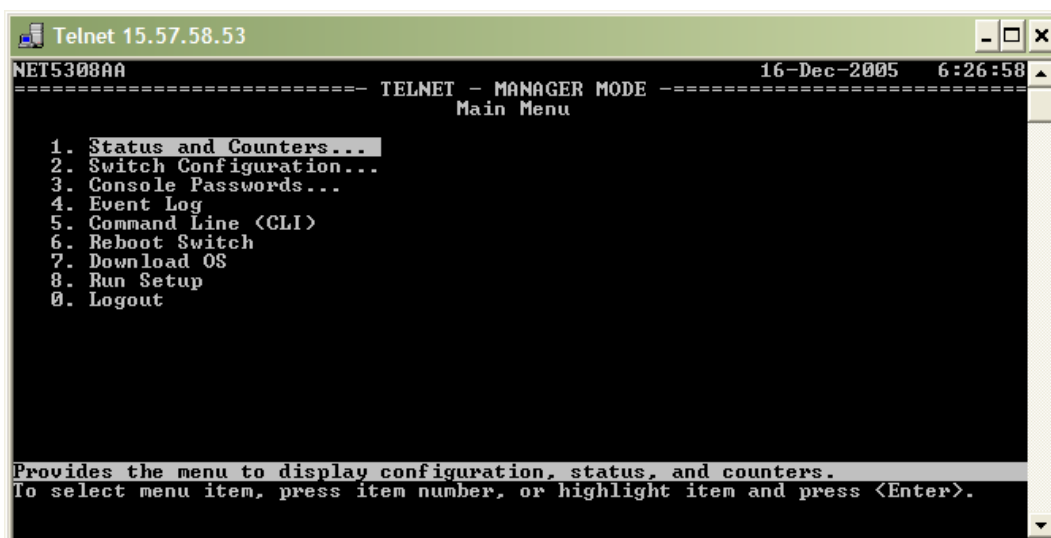


ProCurve – Firmware Upgrade

1. Download the latest firmware version for your switch from our webpage : <http://www.hp.com/rnd/software/switches.htm>
2. Unpack the zip file into a simple directory i.e. c:\temp or c:\tftp
3. Download and unpack the latest version of Tftpd32.
Latest version can be downloaded from: <http://tftpd32.jounin.net/>
4. Start the tftpd32.exe file - click browse and select the folder created in step 2



5. Create a telnet session to your switch (Start > run > telnet <IP-address>) and log in to the unit using your password and username if required.
6. In the CLI session type menu and hit the Enter key – this should take you to the menu interface of the switch. (Should you be asked if you want to save the current configuration please select yes)



7. Select the option Download OS and hit the enter key.

```

Telnet 15.57.58.53
NET5308AA 16-Dec-2005 6:36:42
----- TELNET - MANAGER MODE -----
Download OS

Current Firmware revision : E.10.02

Method [TFTP] : TFTP

TFTP Server [15.57.58.153] :
Remote File Name [E_10_03.swi ] :

Actions->  Cancel  Edit  eXecute  Help

Select the file transfer method (TFTP and XMODEM are currently supported).
Use arrow keys to change field selection, <Space> to toggle field choices,
and <Enter> to go to Actions.

```

8. Select TFTP as Method (change by hitting the space key). Fill in the IP address of your client (can be seen in Tftpd32 > Server interface) and the full filename of the firmware file (located in the directory created in step 2). It should look something like the image below.

```

Telnet 15.57.58.53
NET5308AA 16-Dec-2005 6:32:25
----- TELNET - MANAGER MODE -----
Download OS

Current Firmware revision : E.10.02

Method [TFTP] : TFTP

TFTP Server [15.57.58.153] : 15.57.58.153
Remote File Name [E_10_03.swi ] : E_10_03.swi

Actions->  Cancel  Edit  eXecute  Help

Select the file transfer method (TFTP and XMODEM are currently supported).
Use arrow keys to change field selection, <Space> to toggle field choices,
and <Enter> to go to Actions.

```

9. When all three fields are filled in correctly hit the enter key and in the action list select eXecute. This will initiate the download of the firmware to the switch which usually takes a few seconds. When the download is complete the switch will reboot and automatically load the new firmware – your telnet session will time out.
10. To confirm that the upgrade has gone through correctly start a new telnet session and in the CLI type show system and hit enter. This will give information about the firmware currently running.